

Small support buoys

General surface support buoys are designed to withstand the severe & delicate operating conditions associated with offshore operations.

Made out of closed cell polyethylene foam, coated with resistant Nibraprène® ES 40D polyurethane skin ensuring the buoy will not absorb water even if the skin is damaged, increasing the life expectancy of the product and reducing the maintenance costs.

The resilient material makes the buoys self fendering with a high impact absorption capacity.

Used extensively in single point mooring systems, the three main types of support buoys are:

- Cylindrical buoy (or utility buoy)
- Chain through support buoy
- Pick-up buoy



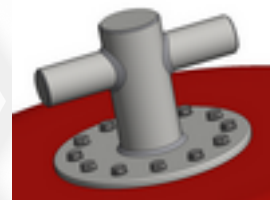
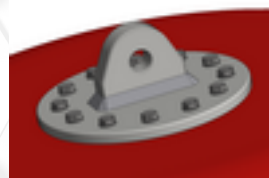
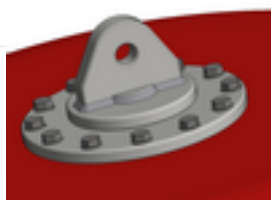
Small support buoys

Small support buoys are specially designed for buoyancy no greater than 1 ton.
For the ends of metallic axle, options described below are available upon request:

- Mechanical welded swivel
- Padeye
- Elbow crucifix
- Crucifix
- Commercial swivel

Features

- Unsinkable, even if damaged
- Long life expectancy
- Reliable
- High impact absorption rate



ZONE FINALENS - DOUVRIN
62091 HAINES CEDEX FRANCE

Tel : +33 (0)3.21.26.88.88
E-mail : contact@veos.fr